



Monster Belting

Rubber Conveyor Belt

MONSTER BELTING INDUSTRY CO.,LTD

*Manufacturer's of
PTFE & silicone coating plastic products*



Our Products:

1. PTFE COATED GLASS CLOTH
 2. PTFE ADHESIVE TAPE
 3. PTFE FABRIC BELT
 4. PTFE OPEN MESH
 5. SILICON COATED GLASS CLOTH
 6. PTFE BAKING LINER
 7. SILICONE BAKING MAT
 8. SPARE PARTS
-

Monster Belting Industry Co., Ltd
Address: No.18, Powerlong Building, Qingdao
city, Shandong Province, 266300, China
Website: www.monsterbelting.com

PTFE COATED GLASS CLOTH

PTFE coated glass cloth consist of a woven fiberglass coated with PTFE dispersion. They are designed for a wide range of applications and come in several grades to meet specific performance requirements.

Properties:

- 1.Outstanding temperature resistance(from -70°C to $+360^{\circ}\text{C}$)
- 2.Excellent chemical resistance
- 3.Superior non-stick surface, easy to clean
- 4.High dielectric strength
- 5.Dimensional stability
- 6.Resistance to UV, IR and HF
- 7.Non-toxic

Applications:

- 1.Used as various of liners to resist high temperature, such as microwave liner, and other liners.
- 2.Used for heat-sealing or cutting of plastic bags or film, the manufacturing of dress shirts and blouses in the sizing process (to seal necks, collars and cuffs without damaging the fabric)
- 3.Used as various conveyor belts, fusing belts, sealing belts and those needs performances of high temperature resistance, non stick, chemical resistance etc.



Item	Color	Thickness	Max Width	Weight	Tensile Strength	Temperature resistance
9006P(Porous)	Beige	0.05mm	1.25m	68g/m ²	550/450N/5cm	-140 ~ 360°C
9008A	brown/black/white	0.08mm	1.25m	155g/m ²	550/450N/5cm	-140 ~ 360°C
9008B	Brown/black/white	0.075mm	1.25m	135g/m ²	550/450N/5cm	-140 ~ 360°C
9013A	Brown/black/white	0.10mm	1.25m	200g/m ²	1100/1000N/5cm	-140 ~ 360°C
9013B	Brown/black/white	0.115mm	1.25m	220g/m ²	1100/1000N/5cm	-140 ~ 360°C
9013C	White/brown	0.125mm	1.25m	255g/m ²	1100/1000N/5cm	-140 ~ 360°C
9015A	brown/black	0.14mm	1.25m	300g/m ²	1200/1000N/5cm	-140 ~ 360°C
9015B	brown/black	0.14mm	1.25m	275g/m ²	1200/1000N/5cm	-140 ~ 360°C
9018A	brown/black	0.17mm	1.25m	380g/m ²	1800/1700N/5cm	-140 ~ 360°C
9018B	brown/black	0.17mm	1.25m	355g/m ²	1800/1700N/5cm	-140 ~ 360°C
9025A	brown/black(anti-static)	0.245mm	3.20m	520g/m ²	2100/1800N/5cm	-140 ~ 360°C
9025B	brown	0.23m	3.20m	480g/m ²	2100/1800N/5cm	-140 ~ 360°C
9025C	brown	0.23mm	3.20m	440g/m ²	2100/1800N/5cm	-140 ~ 360°C
9025D	brown	0.25mm	3.20m	320g/m ²	2100/1800N/5cm	-140 ~ 360°C
9030	brown/black	0.3mm	3.2m	620g/m ²	2500/1800N/5cm	-140 ~ 360°C
9035A	brown	0.34mm	3.20m	680g/m ²	2600/2300N/5cm	-140 ~ 360°C
9035GM	brown	0.33mm	3.20m	620g/m ²	2600/2300N/5cm	-140 ~ 360°C
9035GW (Cutting Grinding Wheel)	Black/Brown	0.37mm	1.2m	570g/m ²	-	-140 ~ 360°C
9040S- single sided	Grey/Brown	0.38mm	1.525m	560 g/m ²	3500/2400/5cm	-140 ~ 360°C
9040A	brown/black(anti-static)	0.42mm	3m	820g/m ²	3000/2500N/5cm	-140 ~ 360°C
9040B	brown	0.40mm	3m	780g/m ²	3000/2500N/5cm	-140 ~ 360°C
9055GW (Cutting Grinding Wheel)	Black/Brown	0.6mm	1.2m	700g/m ²	-	-140 ~ 360°C
9065A	milk white	0.65mm	3m	1150g/m ²	4400/4000N/5cm	-140 ~ 360°C
9070A	milk white	0.7mm	3m	1120 g/m ²	5500/1000N/5cm	-140 ~ 360°C
9070	milk white	0.68mm	3m	1005g/m ²	4500/2796N/5cm	-140 ~ 360°C
9090A	milk white	1.0mm	3m	1650g/m ²	6000/5000N/5cm	-140 ~ 360°C
9090B	milk white	0.90mm	3m	1550g/m ²	6000/5000N/5cm	-140 ~ 360°C



PTFE (TEFLON) ADHESIVE TAPE



PTFE adhesive tape is a fiberglass fabric impregnated with PTFE dispersion and coated with high-temperature, pressure-sensitive silicone adhesive. It is a very durable and versatile product. The combination of PTFE, fiberglass and high temperature silicone adhesive allows Teflon adhesive tape to perform in continuous temperatures up to 500F. It is dimensionally stable and resistant to tears, punctures, abrasion and wear.

Applications:

- 1) As coatings of high-temperature roller, heating plate, release peel ply.
- 2) Heat-sealing materials for food, medicines and plastic bag.
- 3) As gaskets of trough, hopper, aviation molds.
- 4) Other fields in which surface treatment is needed to reach anti-stick, anti-corrosion and high temperature resistance properties.
- 5) For packaging, thermoplastic, composites, heat sealing, electrical and electronic industries.

TECHNICAL DATA SHEET



Item	Thickness	Max Width	Adhesive Strrength (to Steel)	Tensile Strength	Temperature
7008	0.07mm	1250mm	20N/100mm	100N/100mm	-70 ~ 260°C
7012	0.11mm	1250mm	22N/100mm	900N/100mm	-70 ~ 260°C
7013	0.12mm	1250mm	22N/100mm	900N/100mm	-70 ~ 260°C
7015	0.14mm	1250mm	24N/100m	1300N/100mm	-70 ~ 260°C
7018	0.17mm	1250mm	28N/100mm	1700N/100mm	-70 ~ 260°C
7025	0.23mm	1250mm	45N/100mm	2750N/100mm	-70 ~ 260°C
7030	0.28mm	1250mm	62N/100mm	3750N/100mm	-70 ~ 260°C

PTFE FILM ADHESIVE TAPE



Pure PTFE adhesive tape is the one using polytetrafluoroethylene (PTFE) film as base material. Single surface treated and coated with silicone adhesive with excellent heat resistance. The tape exhibits superior features such as desirable electrical properties, heat resistance, chemical resistance and non-adhesiveness.

PROPERTIES:

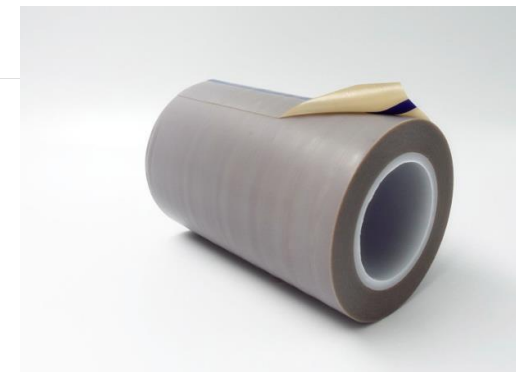
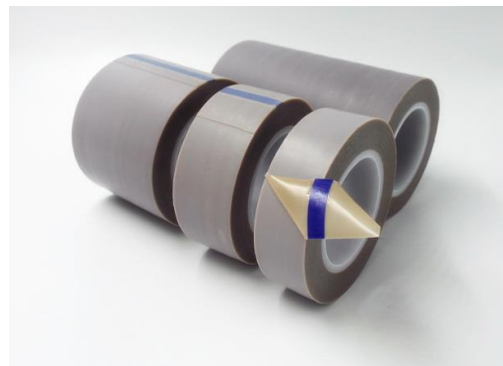
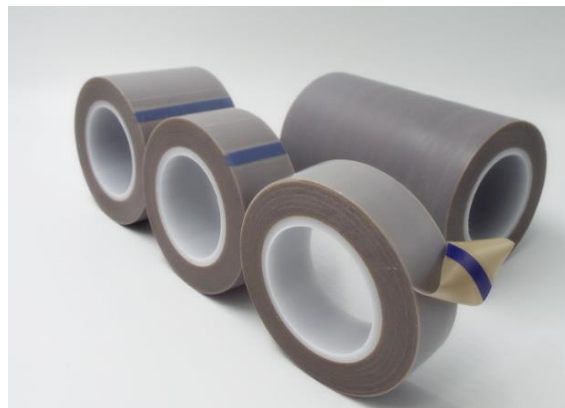
- 1.The non-adhesive side exhibits excellent features of polytetrafluoroethylene (PTFE) such as electrical properties, resistance to heat, weather, chemical, and water (water shedding), and non-adhesiveness.
- 2.Superior tensile strength
- 3.Superior flame resistance
- 4.Can be used in a wide range of temperature (-60°C - 180°C), however, it may vary according to the use condition.

Applications:

1. For roll wrapping in polyethylene laminators (Suitable for long continuous use as the tape has superior durability and mechanical strength).
2. For endless belts of polyethylene laminators.
3. For insulation of coils as a class H insulating material.
4. Can be laminated with metals, plastics and ceramics as general sliding materials

TECHNICAL DATA SHEET

Item	Thickness	Max Width	Adherence Resistance	Tensile Strength	Temperature	Remark
FS7008	0.08mm	600mm	10N-22N/25mm	300N/100mm	-70 ~ 260°C	pure PTFE film
FS7013	0.13mm	600mm	10N-22N/25mm	500N/100mm	-70 ~ 260°C	pure PTFE film
FS7018	0.18mm	600mm	10N-22N/25mm	950N/100mm	-70 ~ 260°C	pure PTFE film
FS7025	0.25mm	600mm	10N-22N/25mm	1400N/100mm	-70 ~ 260°C	pure PTFE film



PTFE FABRIC BELT



PTFE Bag Sealing Belt



vulcanizing machine belt



PTFE laminated belt



PTFE teflon stringer belt



PTFE fusing machine belt

REGULAR SIZE FOR PTFE SEAMLESS FUSING MACHINE BELT

No.	Item	Normal size(mm)
1	400	400×1530/ 400×1830
2	450	450×1530/450×1830
3	460	460×1530/460×1830
4	500	500×1530/500×1880,500×1830/500×2450
5	500	500×1735/500×2020
6	600	600×2440/600×2675
7	600	600×2100/600×4200
8	600	600×1400/600×2000
9	700	700×2450/700×2890
10	900	900×2450
11	915	915×2450/915×3540
12	1000	1000×3950/1000×6730
13	1000	1000×3200
14	1010	1010×3200/1010×6000, 1010×2830/1010×4720



size: Can be customized

2ply laminated belt:

With static-resistance varnished cloth inside and tearing-resistance fiberglass cloth outside, 2ply belt has a great improvement on its intensity, long using life, well balanced thickness, excellent deflecting preventing capacity, smooth surface, it's better for super thin fabric fusing.



Main specifications

No	Thickness of 1st layer	Thickness of 2rd layer	Total Thickness (mm)	Max Width
1	0.08mm	0.08mm	0.15mm	20cm
2	0.13mm	0.13mm	0.25mm	20cm
3	0.15mm	0.15mm	0.29mm	20cm

Remark: Custom size is ok with us

PTFE bag sealing belt

PTFE bag sealing Belts is made of PTFE Coated Fiberglass Fabric, which ensure the long lifetime, heat-resist property and super Non-stick surface of these belts.

Applications of Teflon Sealing Belts

This belt is widely used for many bag packing, sealing, shrink film packaging and so on, like the following.

- High Volume Bag Machines
- Sealing Machines
- Bag Machines
- Shrink Film Packing Machines

Regular size:

750mm*15mm; 1200*15mm

770mm*15mm; 1210*15mm

777mm*15mm; 1175*15mm

810mm*15mm; 1366*15mm

1000mm*15mm; 1600*15mm

1010mm*15mm; 1710*15mm

1100mm*15mm



PTFE OPEN MESH

PTFE(Teflon) coated fiberglass open mesh belt select fine fiberglass, Kevlar or Nomex as basic weaving material, coated with excellent PTFE(Teflon) resin to make it into various of PTFE(Teflon) conveyor belt.

Usage:

- 1.Used as drying conveyor belts in textile, printing and dyeing fields, such as printing drying conveyor belt, dyeing cloth drying belt, fabric shrink drying belt, non-woven drying belt etc.
- 2.Used as drying conveyor belts in silk-screen printing machines, such as loose dryer, offset printing presses, UV series light solid machine.
- 3.Used as conveyor belts for all the situation that need thermal processing transmission conditions, such as cycle drying, microwave drying, freezing and thawing out all kinds of food, heat-shrinking packaging goods, removing moisture for articles, quick drying flux ink etc.

Properties:

1. Outstanding temperature resistance(from -170°C to $+360^{\circ}\text{C}$)
- 2) Resistant to corrosive agents
- 3.Low thermal mass
- 4.Controlled porosity
- 5.Superior non-stick surface, easy to clean
- 6.High dielectric strength
- 7.Dimensional stability
- 8.Resistance to UV, IR and HF
- 9.Non-toxic



TECHNICAL DATA SHEET

Item	Mesh Size	material	Thickness	Weight	Temperature resistance	Max Width	Tensile Strength (Warp/Fill)
6001	1x1mm	PTFE+fiberglass	0.55mm	510g/m ²	-140-360°C	4000mm	2100/1800N/5cm
6002	2x2.5mm	PTFE+fiberglass	0.7mm	540g/m ²	-140-360°C	4000mm	1500/1100N/5cm
6003	4x4mm	PTFE+fiberglass, Single Weft,	0.9mm	480g/m ²	-140-360°C	4000mm	1350/1800N/5cm
6004	4x4mm	PTFE+fiberglass, Double weft+Double Warp	1.3mm	740g/m ²	-140-360°C	4000mm	1750/1900N/5cm
6004K	4x4mm	PTFE+fiberglass+Kevlar, Single Weft,	1.1mm	665g/m ²	-140-360°C	4000mm	2400/2250N/5cm
6005	5x5mm	PTFE+fiberglass, Triple weft+Triple warp	1.6mm	980g/m ²	-140-360°C	4000mm	2600/5900N/5cm
6008	4x4mm	PTFE+fiberglass , Double Weft	1mm	580g/m ²	-140-360°C	4000mm	1700/3500N/5cm
6010	10x10mm	PTFE+fiberglass	1.2mm	450g/m ²	-140-360°C	4000mm	1400/2300N/5cm
6095	0.5x1mm	PTFE+fiberglass	0.9mm	560g/m ²	-140-360°C	4000mm	1300/1800N/5cm

SILICON COATED GLASS CLOTH

Silicone coated glass cloth is a kind of new composite product with high-performance and multi-purpose Feature. It is made of fiberglass cloth calendered or impregnated with silicone rubber. It has good water resistance, fire resistance, chemical resistance, non-toxic and so on and can be used continuously between $-50^{\circ}\text{C} \sim +260^{\circ}\text{C}$. The silicone coated glass cloth has been widely used in aerospace, chemical, petroleum, large-scale power generation equipment, machinery, metallurgy, electrical insulation, construction and other fields.

Features:

1. Heat and cold resistance, good performance in heat preservation.
2. High strength, soft and flexible.
3. Chemical resistance, oil and water proof.
4. Heat resistance, weather resistance, resistant to ozone, oxygen, light and so on.
5. High insulation performance, dielectric constant 3-3.2, breakdown voltage 20~50KV/MM.

Application:

- Fire&heat protection
- Insulation covers and pad
- Fabric expansion joint&Fabric ductwork connector
- Fire doors, Fire&smoke curtains
- Welding&Fire blanket



TECHNICAL DATA SHEET

Item	Model	Total Weight (g/m ²)±5%	Total Weight (oz/yd ²)±5%	Thickness (mm)	Remark
Silicone coated fiberglass cloth	5018	230G/m ²	7oz/yd ²	0.18mm	1. Width: 1000mm-1800mm 2. Color: White, Silver, Red, black and customized 3. Surface treatment: Single side or double sides silicone coating
	5025	280G/m ²	8.3oz/yd ²	0.23mm	
	5043	510G/m ²	15oz/yd ²	0.43mm	
	5045	570G/m ²	17oz/yd ²	0.45mm	
	5046	595G/m ²	17.5oz/yd ²	0.46mm	
	5060	760G/m ²	22.5oz/yd ²	0.6mm	
	5063	800G/m ²	24oz/yd ²	0.62mm	
	5065	860G/m ²	25.5oz/yd ²	0.65mm	
	5085	1080G/m ²	32oz/yd ²	0.85mm	
	5100	1120G/m ²	33.1oz/yd ²	1.0mm	

PTFE BAKING LINER

Non stick Baking sheet, Non Stick Oven liner, BBQ grill mesh sheet, BBQ grill mesh bag, Toast bag, gas stove burner cover.



BBQ grill mat



Gas stove burner cover



BBQ grill mesh bag



PTFE oven liner



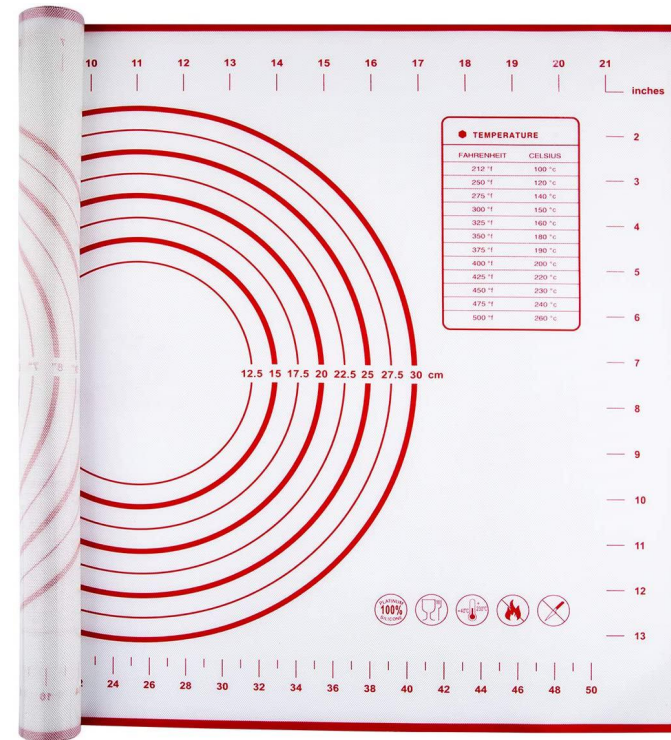
BBQ grill mesh sheet



Non stick Toast bag

SILICONE BAKING MAT

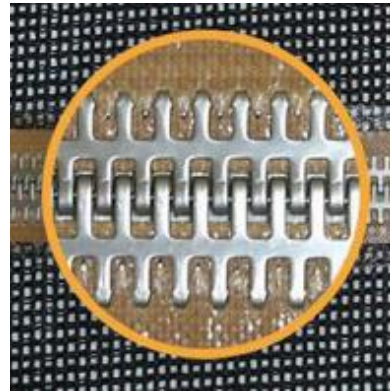
Silicone baking mat is composed of fiberglass and is coated on both sides with anti slip silicone, allowing for the dough to be rolled out effortlessly. Used daily by professionals, the sheets offer multipurpose uses for preparing, cooking, and heating up food. They're also easy to clean--simply wipe them off using hot water and dish soap. Store them by either rolling them up or keeping them flat. Fiberglass baking mats replace parchment paper, and can be used at temperatures varying from -40 degrees C to 270 degrees C . The baking sheets are made in China.



SPARE PARTS



PTFE packing



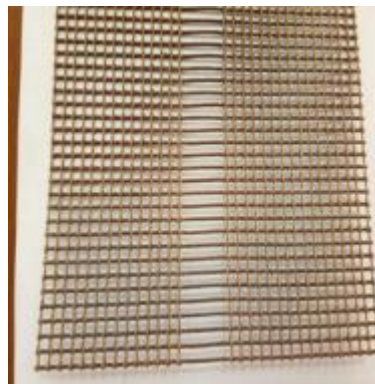
Mental Clips joint



Kevlar Thread



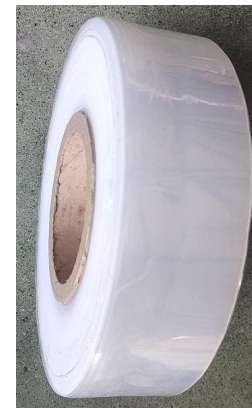
PTFE film



Bull Nose Joint



Teflon iron Shoe



FEP/PFA film



Heat pressing machine

SPARE PARTS



heat press teflon sheet



heat press teflon pillow

Monster Belting Industry Co., Ltd

Address: No.18, Powerlong Building, Qingdao city, Shandong Province, 266300, China

Website: www.monsterbelting.com; Email: sales@monsterbelting.com

Tel:86-0532-55780186

Fax:86-0532-55780987
